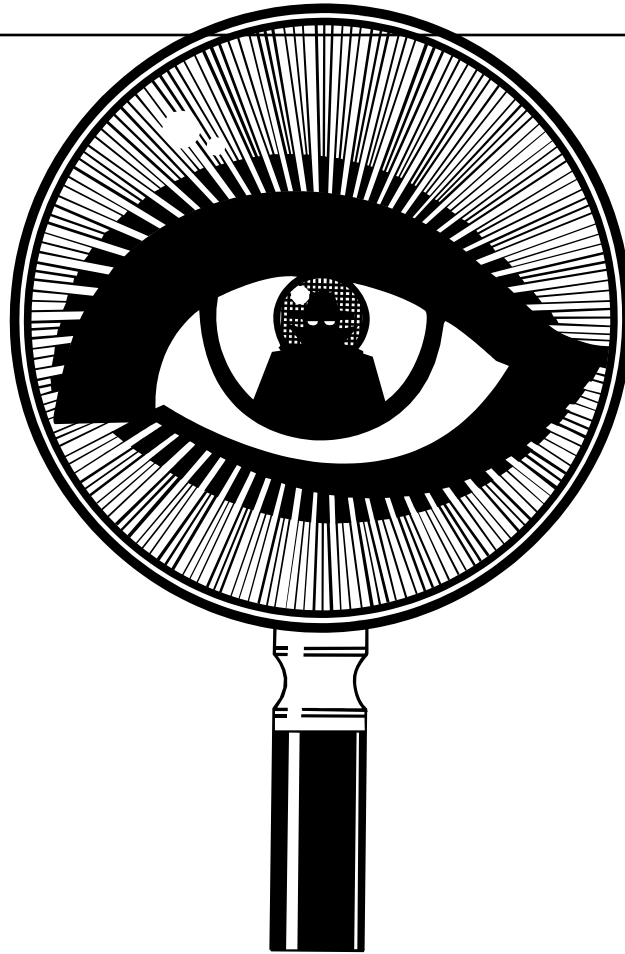


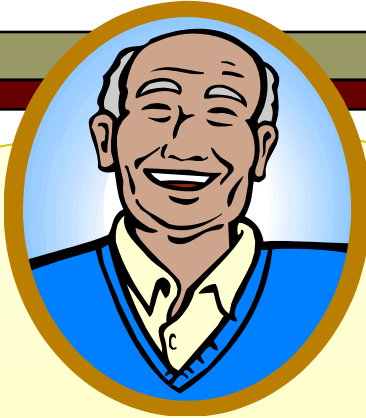


ADULT PROTECTIVE SERVICES

The Washington State Legislature passed the “Abuse of Vulnerable Adults” law in 1984. The law (RCW 74.34) mandates DSHS to Conduct Investigations and provide Protective services and legal remedies to *vulnerable adults*.

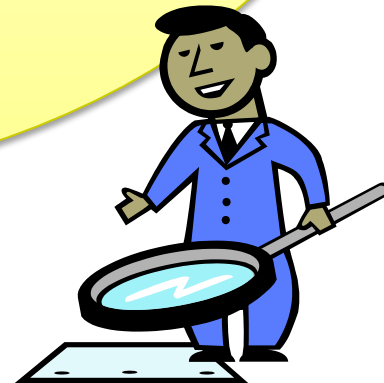
What does Adult Protective Services Investigate & Why?





APS investigates allegations against Vulnerable Adults (VA) that include:

**Abandonment, Abuse, Exploitation & Neglect
for the purpose of protecting vulnerable adults
from current and future harm.**





What does APS do?

- APS investigates reports of Abandonment, Abuse (mental, physical, Financial Exploitation, Exploitation of Person, Neglect and Self-Neglect of vulnerable adults.
- APS offers protective services and legal remedies to victims, and referrals to case management or other resources as appropriate.

APS coordinates efforts with Community Resources and Partnering agencies such as:

Law Enforcement

Social Workers within Home and Community Services for Core Program Services, including In-Home, AFH's and/or Nursing Facilities.

Area Agency on Aging (AAA), RCS, and Hospitals

Division of Developmental Disabilities (DDD)

Domestic Violence Programs

Rape Crisis Centers

Animal Shelters

Fire Marshall

APS is always willing and able to discuss the coordination of services and resources with partnering agencies, including Tribal authorities, for the protection of vulnerable adults.

Who is a Vulnerable Adult?

Cont'd

- ❑ Any person over 18 living in a facility (Nursing Home, Adult Family Home, Boarding Home, Soldier's Home).
- ❑ Any person over 18 receiving services from Home health, Hospice or Home Care Agencies.
- ❑ Any person over 18 receiving services from a contracted Individual Provider.
- ❑ Any person over 18 self-directing their own care to others for compensation.

Who is a Vulnerable Adult?

Vulnerable Adults are Persons:

- ❑ Over 60 years of age with the functional, physical, or mental inability to care for self.
- ❑ Over 18 With a developmental disability under 71A.10.02.
- ❑ Over 18 With a guardian as per chapter 11.88 RCW.



Who can be an Alleged Perpetrator?

Anyone

Who must report?





Mandated Reporter

- DSHS Employee.
- Law Enforcement.
- Social Worker and School Personnel.
- Individual Provider.
- Operator or Employee of a Facility.



Mandated Reporter, cont'd

- Employee of Social Service, Welfare, Mental Health, Home Care, Home Health.
- County Coroner or Medical Examiner.
- Health Care Provider licensed under 18.130 RCW.
- Christian Science Practitioners.



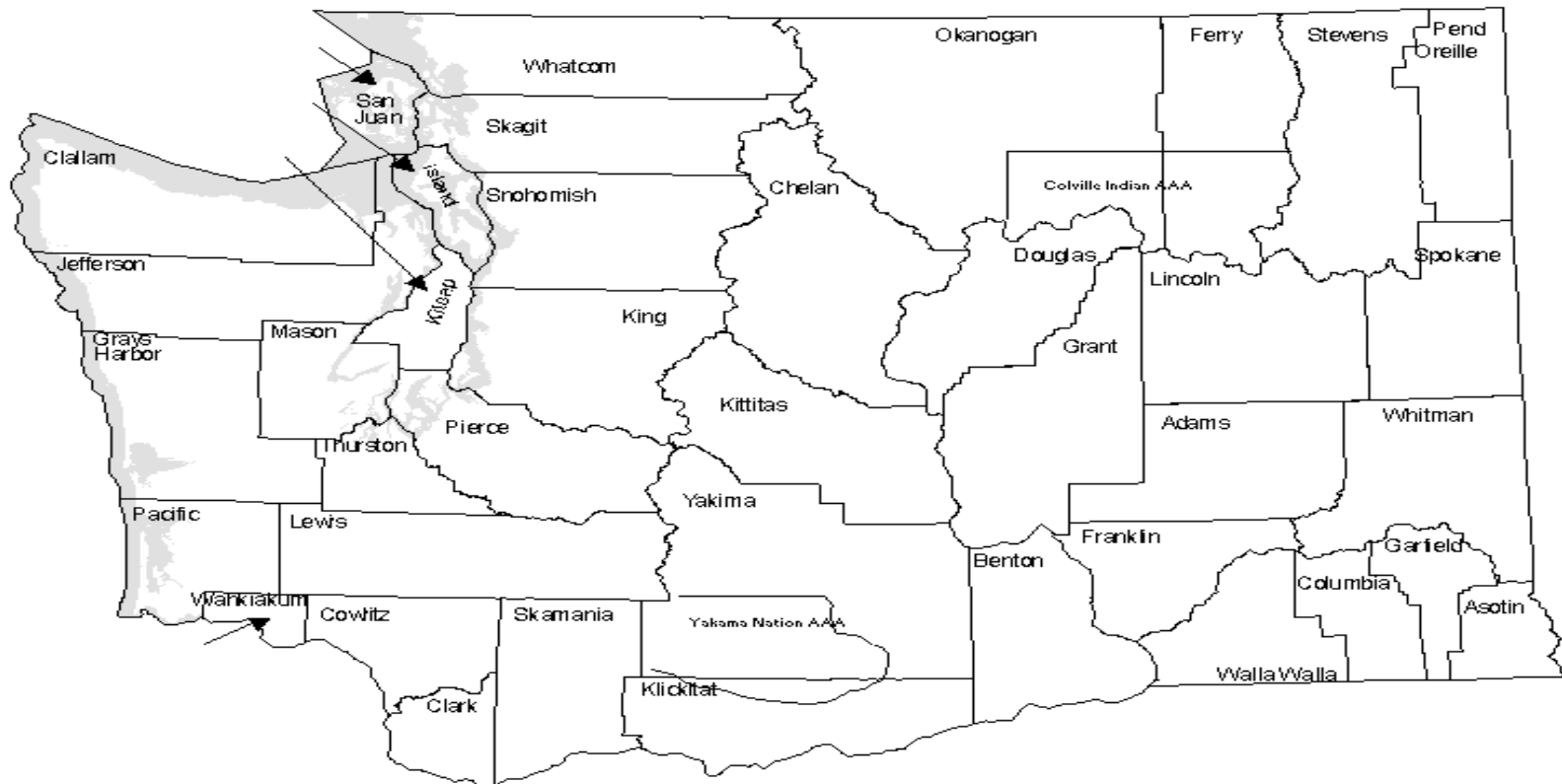
Permissive Reporters

- **Person who may report**
 - Any person (friend, neighbor, relative), including:
 - Attorney.
 - Employee of bank.

WHERE TO REPORT

Region 6 APS toll free: 1-877-734-6277

Fax: 360-664-7603





When should you report?

- *Reasonable cause to believe* that Abandonment, Abuse, Financial Exploitation, Exploitation of Person, Neglect or Self-Neglect is occurring.



How soon must I report?

Make an immediate report to:

- APS (for community)
or
- CRU (for facilities)



When to call Law Enforcement

- Sexual Assault
- Physical Assault

- Immediately report suspected Sexual Assault and physical assault to both law enforcement and the department.



When to Call the M.E. or Coroner

- Report a death to the medical examiner or coroner having jurisdiction, as well as the department and local law enforcement, in the most expeditious manner possible.



What to include in the report:

- Name, Birth Date and Social Security # of Alleged Victim.
- Address, Telephone, Contact Information.
- Current Case Manager's).
- Name, Address & Phone Number of Alleged Perpetrator.

and...



What to include, cont'd

- Allegation/Intake Information.
- Alternate Decision Maker.
- Other Interested Individuals (collateral persons).
- Any other information which will assist in investigation (safety issues, family dynamics, relevant history, work schedule).



Reporting Protections

- Immunity: When making a report in good faith or testifying about the Abandonment, Abuse, Neglect, Financial Exploitation, Exploitation of person or Self-Neglect.
- Confidentiality: Identity of person making the report can remain confidential unless a report is made to law enforcement, or there is a judicial proceeding, or the reporter consents.



What happens after your report?

- ❑ APS Intake will determine if an investigation is warranted and assign to APS Social Worker.
- ❑ Report of suspected criminal activity is made to law enforcement.
- ❑ Client interviewed, risk factors are determined.
- ❑ Immediate protective services are offered if needed.

and...



What happens, cont'd

- Collateral information is collected.
- Alleged perpetrator is interviewed, in most instances.
- Determination made whether mistreatment occurred, based upon collected information.
- Further protective services offered, if needed.

Response Times

- Initial face-to face contact with the alleged victim will vary from 24 hours to 10 working days, depending on the allegation and the risk to the alleged victim.

High – 24 hours; Medium – 5 days; Low – 10 days

- Duration of investigation depends on multiple factors, and varies. There is no time limit on investigation length.



When can APS help?

- When a vulnerable adult accepts and agrees to APS services.
- Even though a client may not meet APS criteria, information and referral may be provided as needed.



What APS can't do

LIMITATIONS

Cannot provide protective services without consent of client.

Cannot remove client from home without consent.

APS provides protective services and legal remedies in the least restrictive form to the VA.

These include:

Making referrals to the Attorney General's Office for legal remedies such as:

Obtaining a Protection Order

Establishing, removing or modifying a Guardianship

Intervening in a Power of Attorney



2009/2010 APS Clark County

2010

986 Reports Received

82	Physical Abuse
20	Sexual Abuse
170	Mental Abuse
202	Neglect
282	Self Neglect
43	Exploit Person
278	Financial Exploitation
3	Abandonment

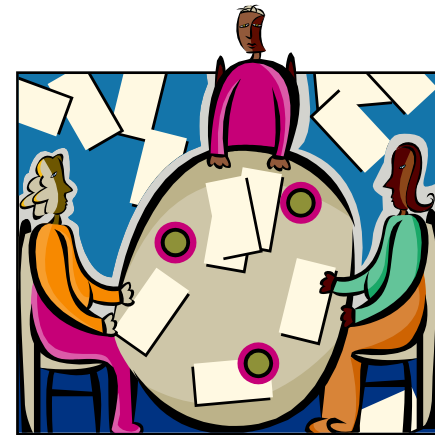
2009

961 Reports Received

93
26
195
218
237
43
277
3

APS is able and willing to work with partnering agencies in a cooperative and collaborative manner with the goal of protecting our vulnerable Adult population from further harm.

APS will staff, consult or provide any specific areas of training you may be in need of. To discuss this, or any other specific information, please contact me.



Thank You